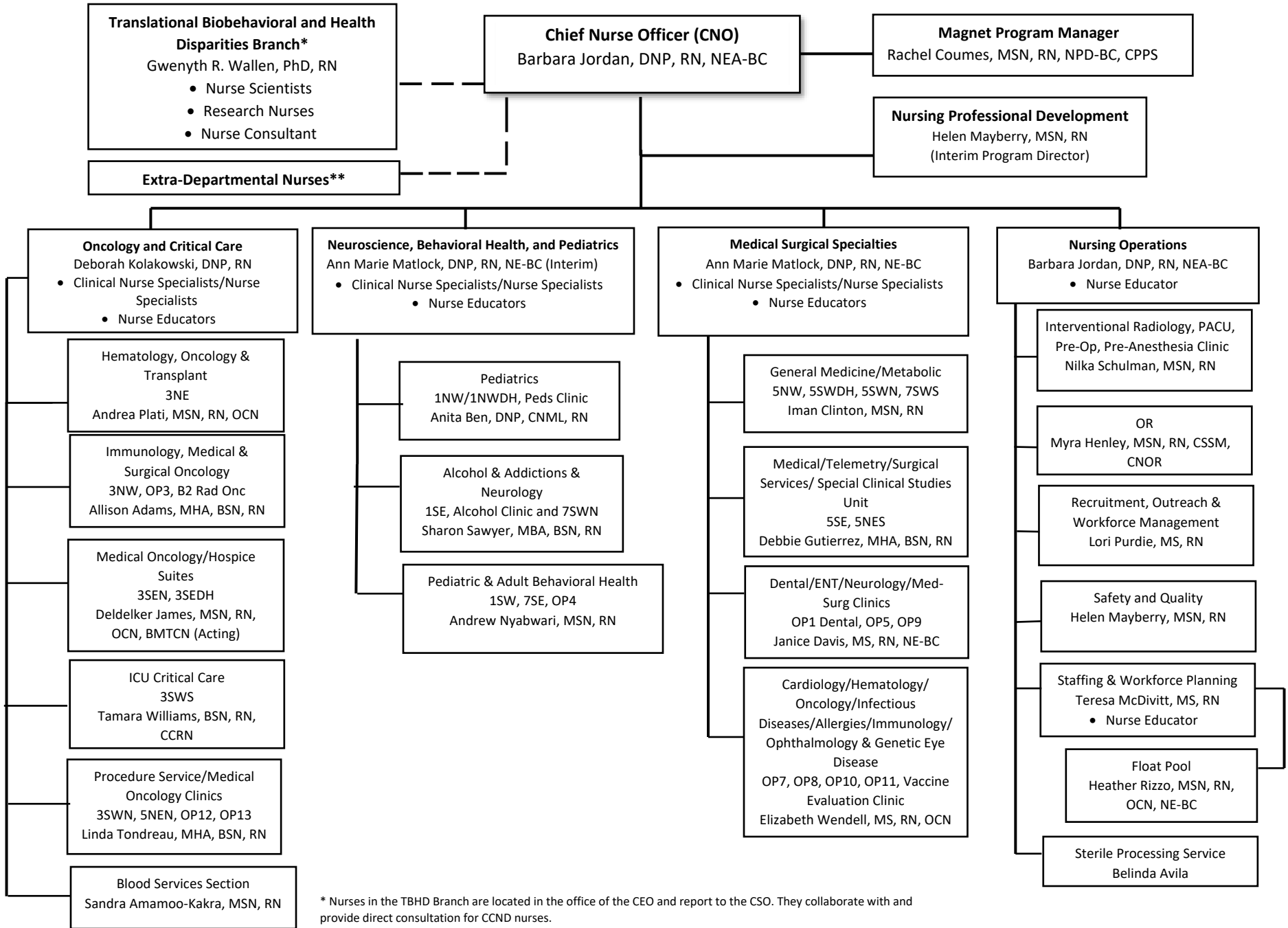


# Clinical Center Nursing Department



\* Nurses in the TBHD Branch are located in the office of the CEO and report to the CSO. They collaborate with and provide direct consultation for CCND nurses.

\*\* Nurses (including APRN's) working in other Clinical Center Departments and Institutes. The CNO approves the credentials and privileges for these nurses to practice in the Clinical Center.